

**CAST IRON OR DUCTILE IRON  
NON-RISING STEM GATE VALVE BOLTED BONNET**

**DESIGN DESCRIPTION:**

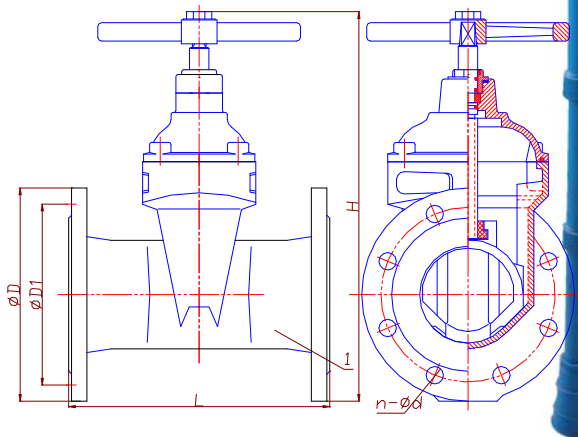
- Design: DIN3352;
- Manufacture: Factory STD;
- Face To Face: DIN3202-F5
- Flange: DIN2531/2532/2533;
- Bolt Bonnet;
- Soft Seal;
- Material and Working Temp.:
  - ◆ Cast Iron and Ductile Iron: 0°C-200°C(32°F-392°F)
  - ◆ Buna-N: 0°C-71°C(160°F) Maximum
  - ◆ EPDM: 0°C-80°C(176°F) Maximum



**PARTS AND MATERIAL:**

NO.	PARTS NAME	MATERIALS
1	BODY	ASTM A126-B/A536, DIN GG25/GGG40
2	DISC	Ductile iron with NBR/EPDM
3	STEM NUT	BRASS
4	STEM	2CR13/BRASS
5	BONNET	ASTM A126-B/A536, DIN GG25/GGG40
6	HAND WHEEL	CAST IRON OR DUCTILE IRON
7	GLAND	BRASS
8	O-RING	EPDM
9	O-RING	EPDM
10	MATEL O-RING	CAST STEEL

OTHER MATERIALS ARE AVAILABLE UPON REQUEST.



**DIMENSIONS LIST(UNIT:MM):**

DN	40	50	65	80	100	125	150	200	250	300	350	400	450	500	600
Size	1-1/2"	2"	2-1/2"	3"	4"	5"	6"	8"	10"	12"	14"	16"	15"	20"	24"
L	240	250	270	280	300	325	350	400	450	500	550	600	650	700	800
H	240	270	300	330	375	425	515	600	685	755	835	880	960	1120	240
PN10															
D	150	165	185	200	220	250	285	340	395	445	505	565	615	670	780
n	4	4	4	4	8	8	8	8	12	12	16	16	20	20	20
d	18	18	18	18	18	18	22	22	22	22	22	26	26	26	30
D1	110	125	145	160	180	210	240	295	350	400	460	515	565	620	725
PN16															
D	150	165	185	200	220	250	285	340	405	460	520	580	640	715	840
n	4	4	4	8	8	8	8	12	12	12	16	16	20	20	20
d	18	18	18	18	18	18	22	22	26	26	26	30	30	33	36
D1	110	125	145	160	180	210	240	295	355	410	470	525	585	650	770

✧ We hereby reserve the rights of any alternative dimension that would help to improve our valve's quality and working efficiency.